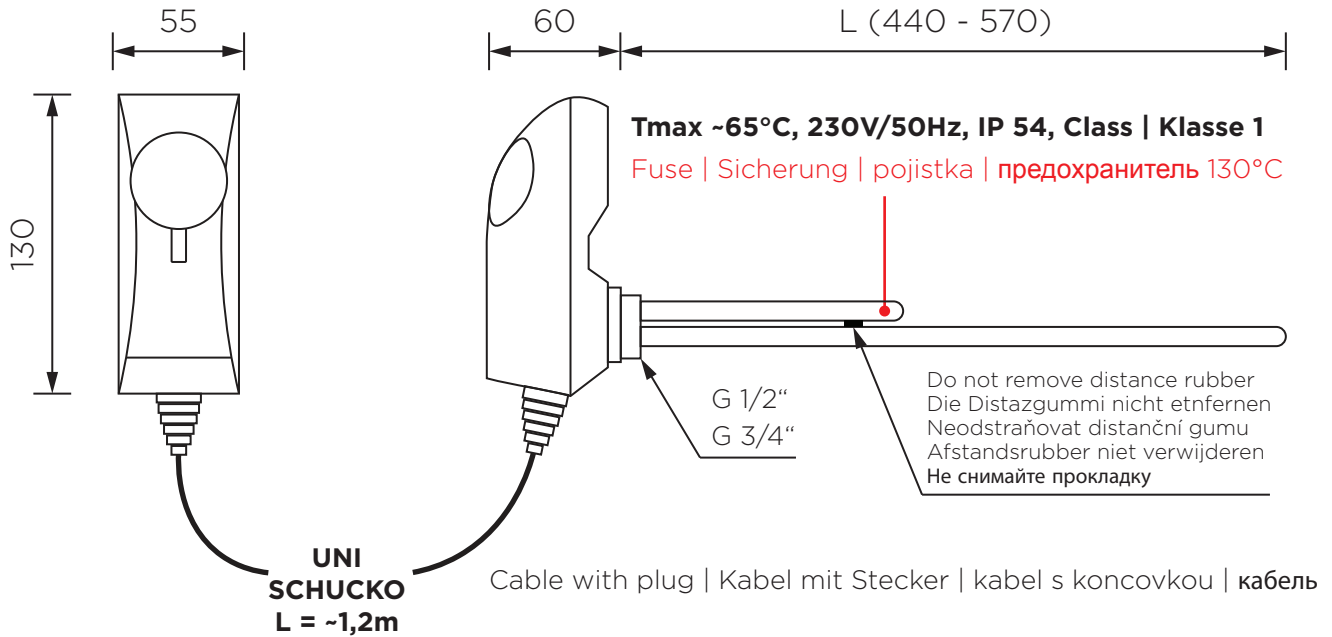




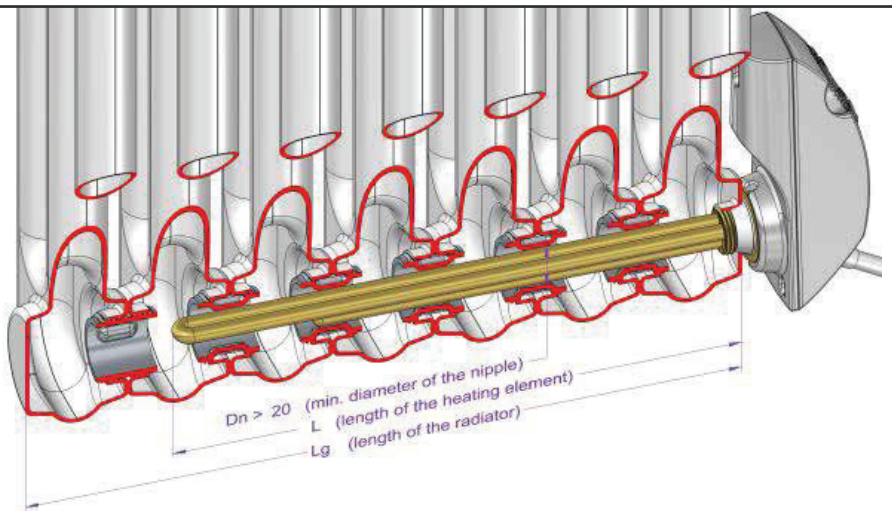
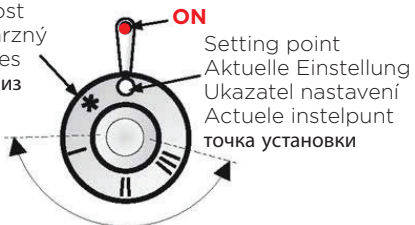
example of installation | Beispiel von Einbau - Direktanschluss
příklad instalace | пример установки

Code	U	P	L	Tmax	R	Vmin	Vmax
	[V]	[W]	[mm]	[°C]		[liter]	[liter]
HE0900	230	900	440	65°C	1/2"	4,5	7,5
HE1200	230	1200	470	65°C	1/2"	5,5	8,5
HE1500	230	1500	520	65°C	3/4"	6,5	10,0
HE2000	230	2000	570	65°C	3/4"	8,5	18,0



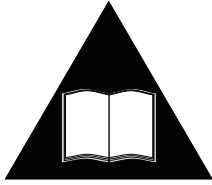
ON/OFF
turn | drehen | otoč | beurt | повернут

Antifreeze
Antifrost
nezámrazný
antivries
антифриз



Typ EL.HE, all dimesions in mm

**HGT electric heater
with capillary
temperature regulator**



Please read the instructions before use.

HHETUK1712

The heater complies with EC standards



- 1 -

SAFETY

1. The heater should be installed by a qualified person.
2. Bathroom radiators fitted with electric heaters should be fixed not less than 60 cm from a bath, shower or wash basin, and never above a bath.
3. This equipment requires RCD protection with rated residual operating current not exceeding 30mA.
4. This equipment must be connected to circuit protective conductor (earth).
5. For the heater permanently connected (hard wire) there must be applied a cut-off device from the mains. Such a device must disconnect the heater from the supply mains in 2 poles, with contact separation of at least 3 mm.
6. This appliance can be used by children aged from 8 years and above and persons with reduced physical, sensory or mental capabilities or lack of experience and knowledge if they have been given supervision or instruction concerning use of the appliance in a safe way and understand the hazards involved.
7. Children shall not play with the appliance.
8. Cleaning and user maintenance shall not be made by children without supervision.

- 2 -

- 3 -

HGT electric heaters are designed for use in water, water/glycol filled column and aluminium radiators
For aluminium radiators please use a water content (instead of radiator's output)

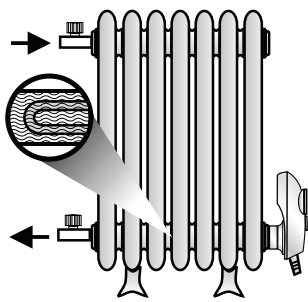
Water content [l]	Radiator output [W]		Recommended HGT Heater HGT heater output [W]	Length of heating element [mm]	Flange
	max.	min.			
min. 1,5	350	300	340	340	R 1/2"
3,0	550	600	390	390	R 1/2"
4,5	850	900	440	440	R 1/2"
7,5	1050	1200	470	470	R 3/4"
8,5	1300	1500	520	520	R 3/4"
10,0	1800	2000	570	570	R 3/4"

If the radiator parameters are different from the ones in the table, there is the need to consult the proper section with the heater vendor or producer.

- 4 -

Installation and structure

I radiator in CH system



- 5 -

I radiator in CH system

Open valves and vent the radiator. Next close inlet valve (thermostatic controller).
Caution! Only one valve must be closed.

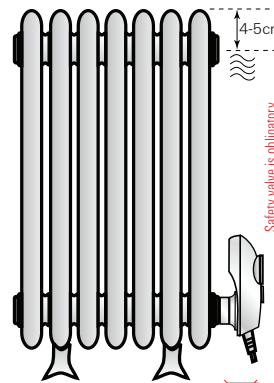
II electric radiator

It is recommended to fill the radiator only up to 95% of its capacity (leave 4-5cm of air in the manifold), taking into account thermal expansion of water. Check the capacity in the instruction manual of the radiator manufacturer.

Check that the radiator is watertight after filling.

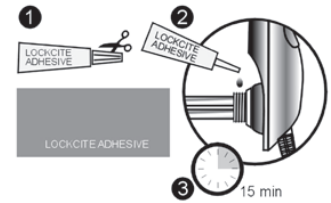
- 6 -

II electric radiator



- 7 -

Because of the shape of HGT heater casing, with some aluminium and brass radiators it may be necessary to use a spacer bush to permit the heater to be turned fully into position.

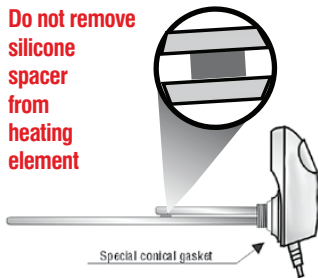


Before inserting the HGT heater into the radiator, a small amount of Loctite Adhesive (included) should be smeared over half of the circumference of the thread. **DO NOT put Loctite on the conical gasket, AVOID CONTACT WITH THE SKIN.** The Loctite adhesive bonds within 15 min.

- 8 -

Installation and structure

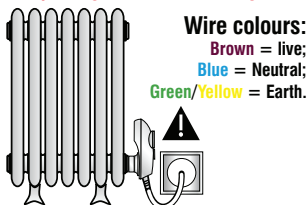
Do not remove silicone spacer from heating element



After placing the adhesive on the thread the HGT heater should be firmly screwed into the radiator by hand. No special tools are required. The special conical gasket fitted to the 1/2" or 3/4" connection of the heater enables the heater to be screwed into the radiator until the control box is vertical.

- 9 -

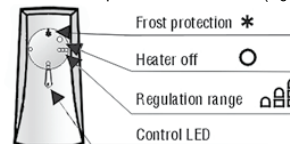
Electrical installation in a bathroom should be entrusted to a qualified electrician for hard wiring in compliance with UK electrical regulations. This equipment requires RCD protection with rated residual operating current not exceeding 30mA.



Connect the heater to the mains 230V.

- 10 -

The HGT heater is switched on by turning the control knob clockwise, and the LED on the casing will light up. The star shaped position on the control knob is for frost protection (approx. 10°C). The range of temperature regulation is from 20°C to 65°C (±5°C). The heater is turned off by turning the control knob as far as possible anticlockwise (Fig. 1)



Maintenance: The HGT heater **MUST BE DISCONNECTED** before cleaning the casing. The casing may be cleaned using a soft cleaning agent on a damp cloth. **AVOID SOAKING THE CASING.** The heating element must be fully immersed. The radiator should be fully purged of air

- 11 -

GUARANTEE TERMS:

Guarantee is granted by manufacturer for 24 months period starting from date of sale, but no longer than 36 months from date of the heater manufacture. Defects revealed within this period, resulting from a fault of manufacturer will be repaired free of charge or the item replaced with new, equivalent one. Term of complaints' investigation up to 14 (fourteen) days from date of submission to the manufacturer. **Guarantee does not cover:**

1. Using of product in a manner incompliant with attached instructions.
2. Any visible damage to the heating element or controller due to improper use.

Damaging of manufacturer's seals makes the guarantee null and void.

- 12 -

Typ EL.HE, all dimesions in mm